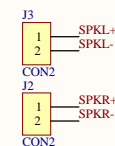
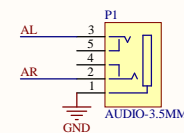
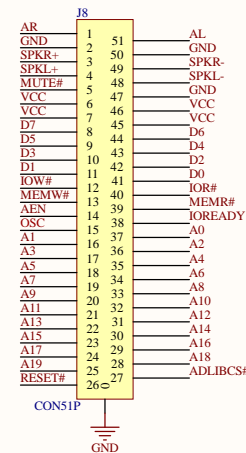
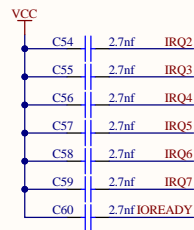
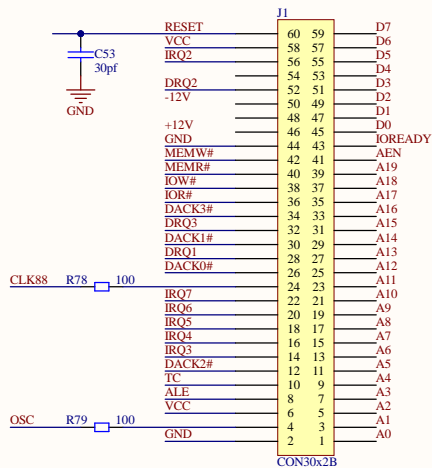
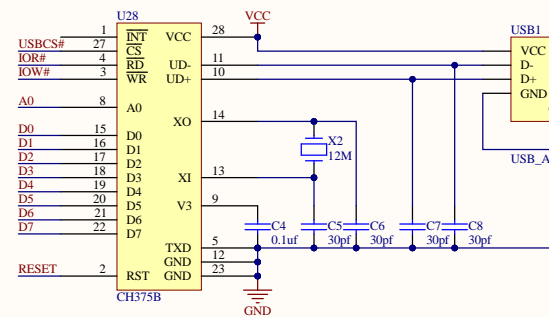
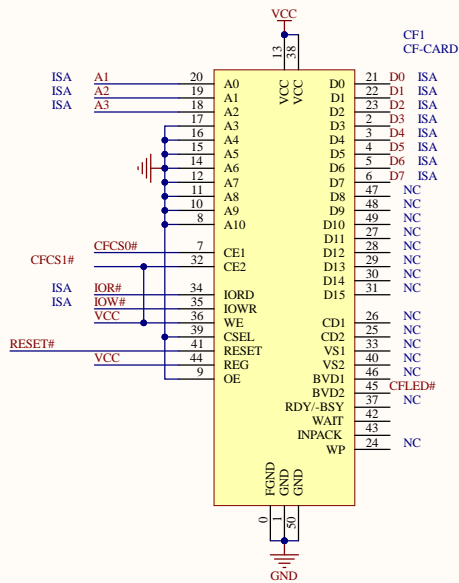
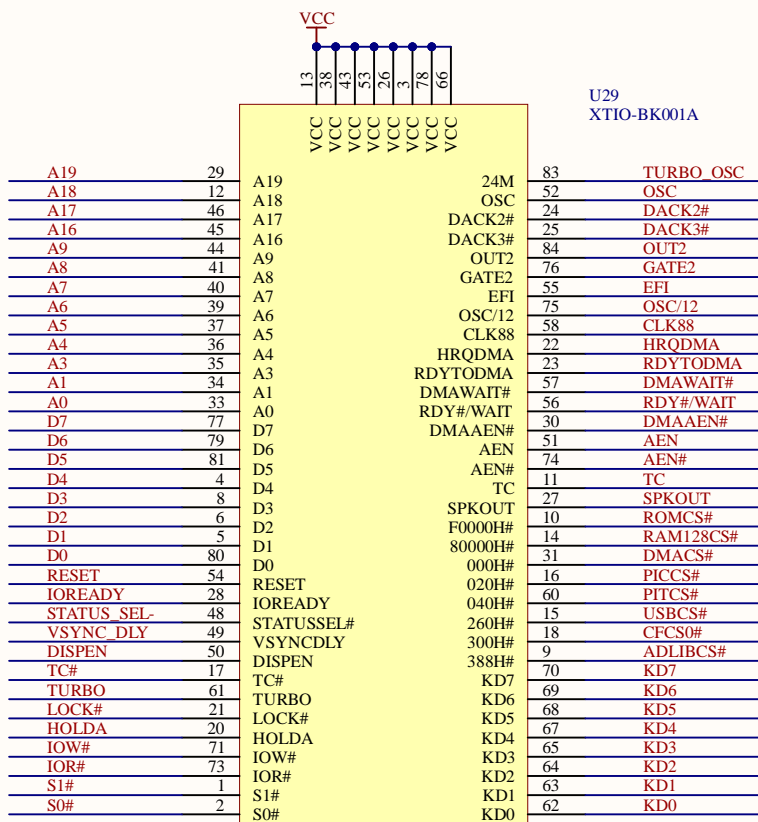


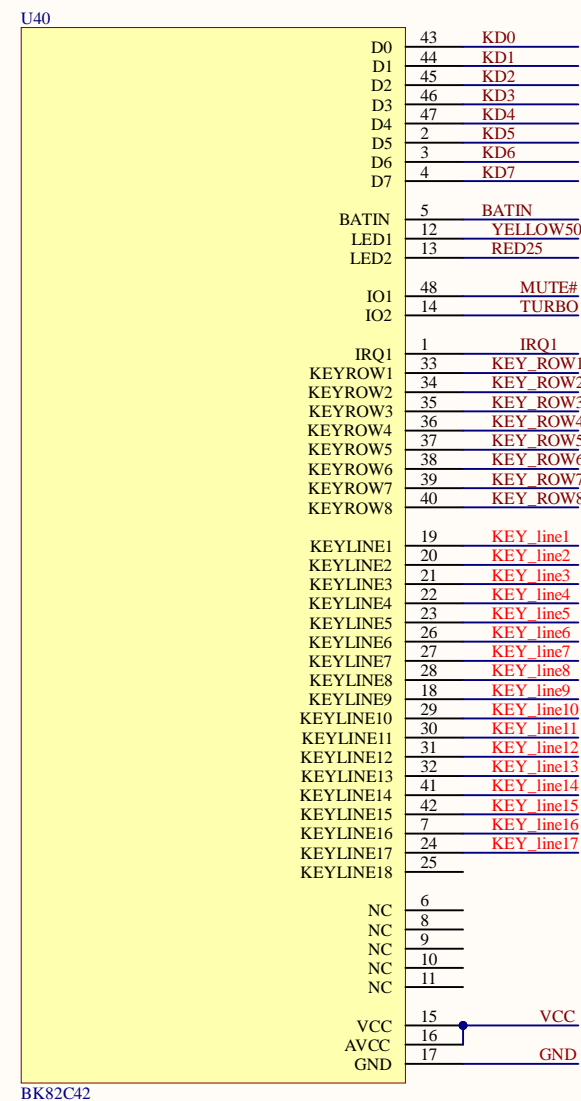
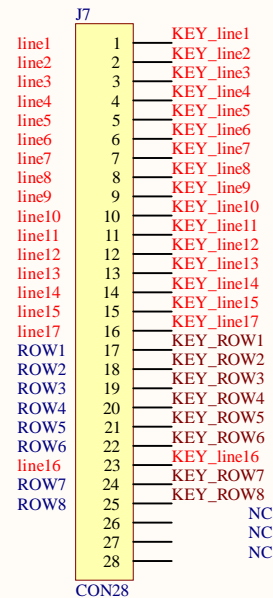
Title		
Size	Number	Revision
A3		
Date:	5/10/2023	Sheet of
File:	C:\Users\1\SchDoc	Drawn By:



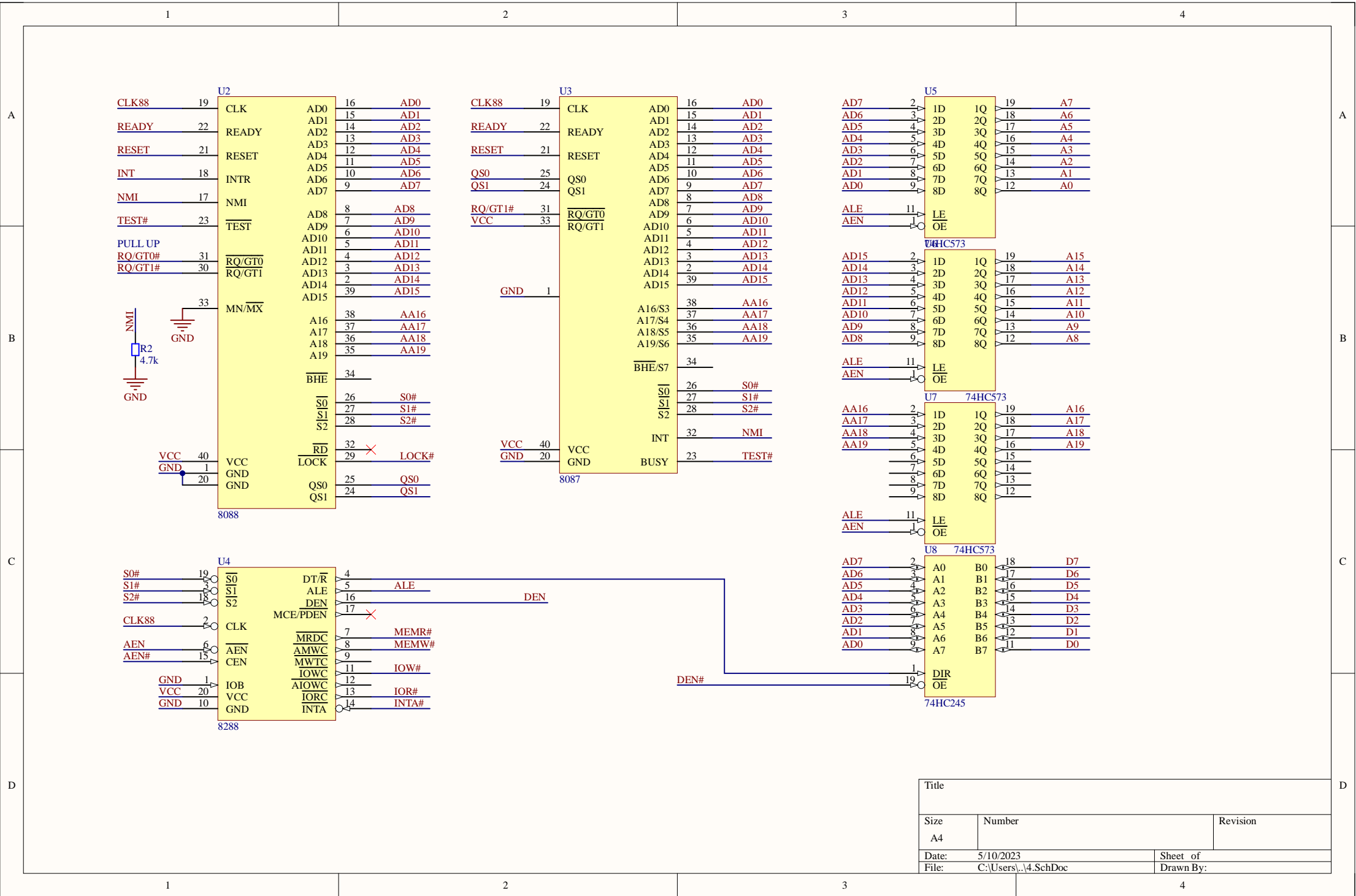
Title		
Size	Number	Revision
A3		
Date:	5/10/2023	Sheet of
File:	C:\Users\12\SchDoc	Drawn By:



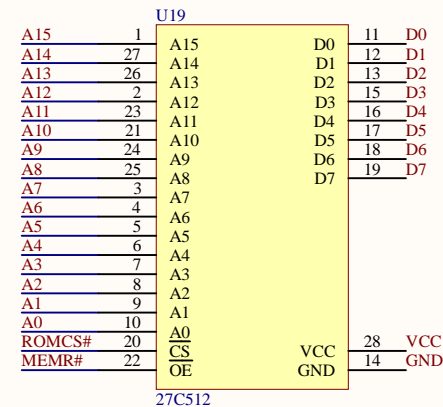
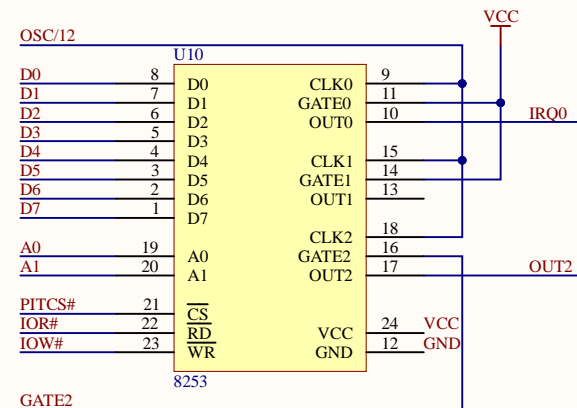
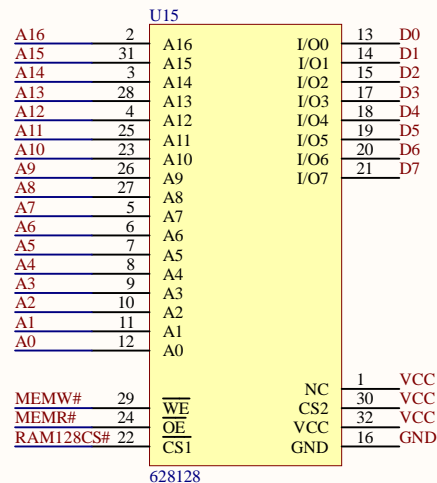
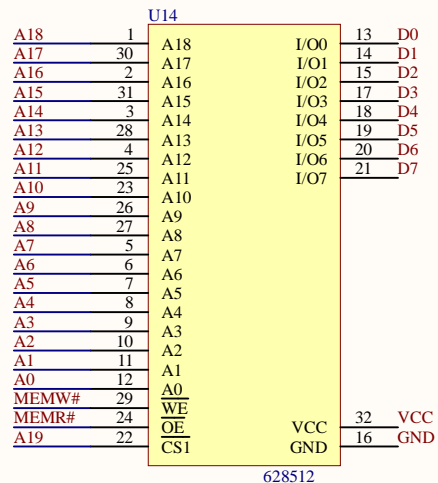
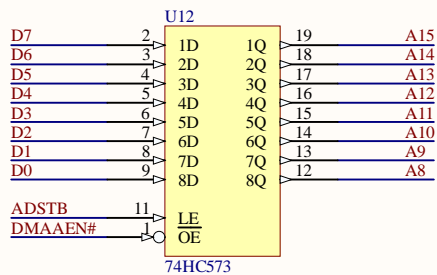
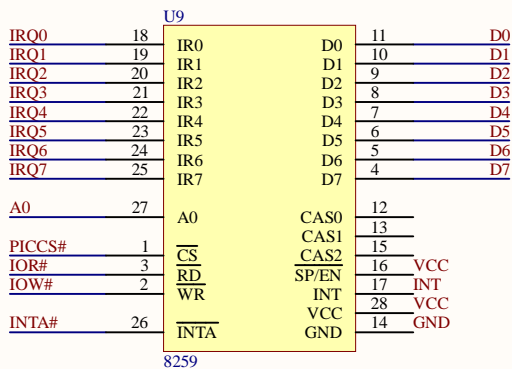
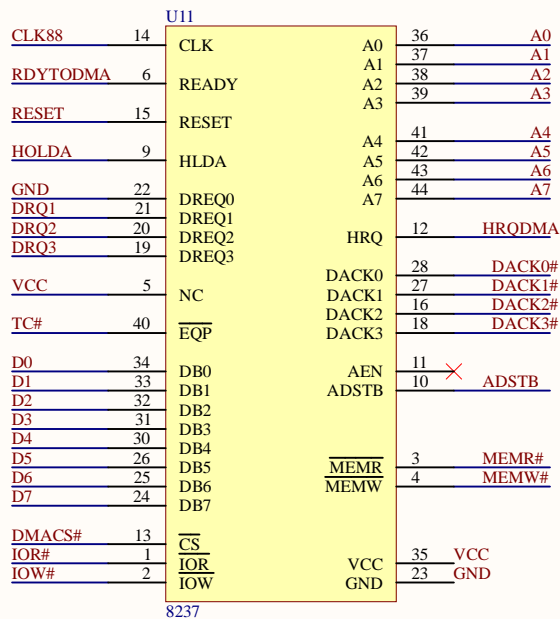
shift-r  
only 1 key



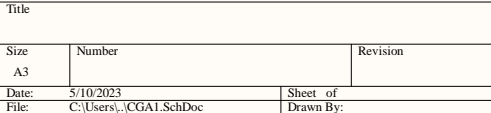
Title		
Size	Number	Revision
A4		
Date:	5/10/2023	Sheet of
File:	C:\Users\...\3.SchDoc	Drawn By:

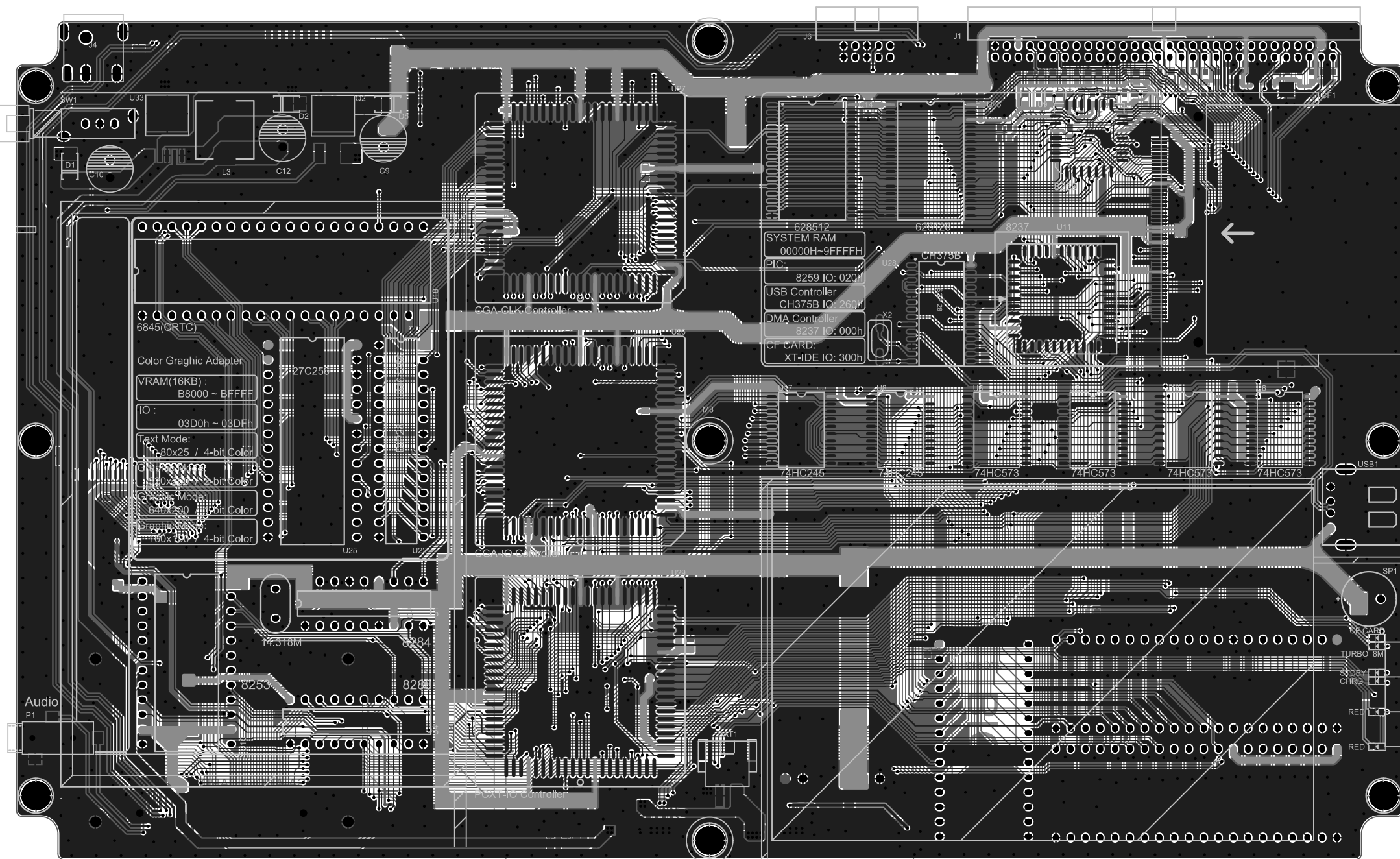


Title		
Size	Number	Revision
A4		
Date:	5/10/2023	Sheet of
File:	C:\Users\...\4.SchDoc	Drawn By:



Title		
Size	Number	Revision
A4		
Date:	5/10/2023	Sheet of
File:	C:\Users\...\5.SchDoc	Drawn By:





Comment	Description	Designator	Footprint	LibRef	Quantity
CON2		BA11	XH-2-SMD	CON2	1
10uf		C1, C17, C18, C47, C51	C0603	OCAP, CAP	5
30pf		C2, C3, C5, C6, C7, C8, C53	C0603	OCAP, CAP	7
0.1uf		C4, C19, C20, C21, C22, C23, C24, C25, C26, C27, C28, C29, C30, C31, C32, C33, C34, C35, C36, C37, C38, C39, C40, C41, C42, C43, C44, C45, C46, C48, C49, C50, C52	C0603	CAP, OCAP	33
470uf		C9, C10, C12, C14, C16	CD8	OCAP1	5
1uf		C11, C13, C15	C0603	CAP	3
2.7nf		C54, C55, C56, C57, C58, C59, C60	C0603	OCAP	7
CF-CARD		CF1	CF-CARD-B	CF-CARD	1
SS54		D1, D2, D3, D4, D5	DO-214A(SMA)	ODIODE, DIODE1	5
1N5819		D8, D9, D10, D11, D12, D13	SOD123	DIODE1	6
CON30x2B		J1	IDC2x30(2.0)B	CON30x2B	1
CON2		J2, J3	1.25mm8-2P	CON2	2
DCIN	Connector	J4	DC5.5-.044	DCIN	1
CON12		J5	1.25mm8-12P	CON12	1
CON5x2		J6	IDC2x5(2.0)B	CON5x2	1
CON28		J7	FCP1.0-28A	CON28	1
CON51P		J8	BTB1.0-51P	CON51P	1
47uH		L4	L1010	L	1
ZR2		L4	L7x7	L	1
CF CARD		LED1	LED0603	LED	1
TURBO 8M		LED2	LED0603	OLED	1
RED		LED3, LED4	LED0603	OLED	2
CHRG		LED5	LED0603	OLED	1
STDBY		LED6	LED0603	OLED	1
CON1		M1, M2, M3, M4, M5, M6, M7, M8, M9	M3	CON1	9
AUDIO-.35MM		P1	AUDIO-	AUDIO-.35MM	1
2N3904		Q1	SOT23	ONPN	1
AOD403	P-Channel MOSFET	Q2	TO-252-MOS	MOSFET-P	1
AO4453		Q3	SO-8	MOS-SO-8	1
30k		R1, R26, R27, R30	R0603	ORES, RES2	4
4.7k		R2, R3, R4, R5, R6, R7, R8, R9, R10, R11, R12, R15, R43, R44, R45, R46, R47, R48, R49, R50, R51, R52, R53, R54, R55, R56, R57, R58, R59, R60, R61, R62, R63, R64, R65, R66, R67, R68, R69, R70, R71, R72, R73, R74, R75, R76, R77	R0603	RES2, ORES	47
1k		R13, R14, R16, R17, R18, R29, R33, R34, R36	R0603	ORES, RES2	9
590		R19, R20, R21, R22, R28	R0603	ORES, RES2	5
100		R23, R24, R25, R78, R79	R0603	ORES	5
10k		R31	R0603	RES2	1
1.5k		R32	R0603	RES2	1
0.4R		R35	1206	ORES	1
NC		R37, R38, R39, R40, R41, R42	R0603	ORES	6
BELL		SP1	BELL - 9mm	BELL	1
POWER		SW1	SW3	SW1_1	1
CON1		T1, T2, T3, T4	M2-A	CON1	4
8284		U1	DIP18	8284	1
8088		U2	DIP40	8086-1	1
8087		U3	DIP40	8087_1	1
8288		U4	DIP20	8288_1	1
74HC573		U5, U6, U7, U12	SOP20B	74LS573	4
74HC245		U8, U17	SOP20B	74LS245	2
8259		U9	PLCC28	8259	1
8253		U10	DIP24	8254	1
8237		U11	PLCC44S	8237PLCC	1
628512		U14	SOP-32B	628512	1
628128		U15	SOP-32B	628128	1
6845(CRTC)		U18	DIP40	MC6845	1
27C512		U19	DIP28	27C512	1
UM61256		U22	DIP28B	62256	1
27C256		U25	DIP28	29C256	1
CGAA-BK001A		U26	PLCC84S	C-CGAA-BK001A	1
CGAB-BK001A		U27	PLCC84S	C-CGAB-BK001A	1
CH375B		U28	SOP-28	CH375	1
XTIO-BK001A		U29	PLCC84S	C-XTIO-BK001A	1
XR2981		U31	SO-8 A	XR2981	1
TP4056		U32	SO-8 A	TP4056	1
XL1507-5		U33	TO-252-5	XL1507	1
BK82C42		U40	LOFP48	BK82C42	1
USB_A		USB1	USB-A	USB_A	1
14.318M		X1	XTAL	CRYSTAL	1
12M		X2	CRY-49S-mini	CRYSTAL	1
24M		X4	CRY-5032	CRYSTAL-4P	1